



# Moisolar<sup>®</sup>

## NORDIC SLOPE

### SLOPE ROOF MOUNTING SYSTEM

#### DURABLE

Self curing Zn-Al-Mg coated steel  
Up to 3 times better corrosion resistance compared to galvanized  
The thickened material and reinforced design significantly enhance the support strength

#### 35 YEARS MATERIAL WARRANTY

Thoughtful choice of materials and design development will provide care-free and lasting mounting of the solar power station for several decades ahead

#### QUICK & EASY TO INSTALL

The system is designed in close cooperation with installers and the result is fast and easy installation even by single installer

#### DESIGNED FOR NORDIC

Designed to withstand the challenging Nordic weather conditions, with its snow and wind loads  
Mounting material calculator for easy work planning



[info@moisolar.com](mailto:info@moisolar.com)



[www.moisolar.com](http://www.moisolar.com)



+358 40 838 2368

# MOISOLAR NORDIC SLOPE

DESIGNED  
FOR  
NORDIC

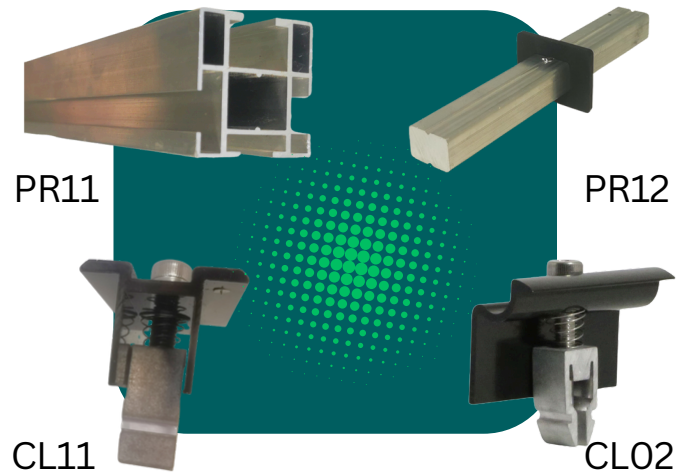


## TESTED QUALITY

- Salt spray corrosion tested Zn-Al-Mg coated steel alloy
- Load tested by SGS
- 35 years material warranty

## EASY TO INSTALL

- Aluminum profile and tailor made connector with rubber spacer for evenly distributed support on the joints
- Spring raised clamps for quick and easy one-person panel installation.
- Middle clamp body is equipped with stopper to prevent the clamp from falling apart when bolt is completely loosened.
- For 30-40mm panels
- Integrated grounding pins



## SOLAR PANEL FIXTURE CALCULATOR



Calculator for quick and precise estimation of the materials needed for each project. Scan the QR code to the calculator!

<https://moisolar.com/fixture-calculator/>

**Moisolar**

✉ info@moisolar.com

🌐 www.moisolar.com

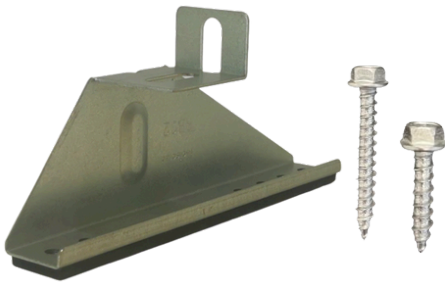
☎ +358 40 838 2368

# NORDIC SLOPE

## ROOF BRACKETS



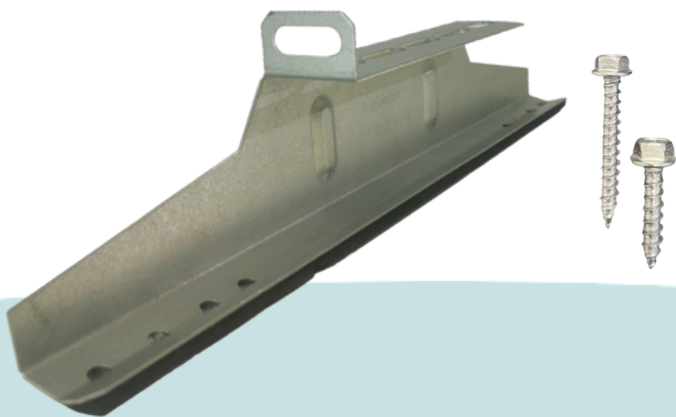
- RB11
- For lock-seamed metal roof
- Adjustable height



- RB12 for felt roof and metal profile roof
- Pre-installed gasket strip
- *Optional screws, 4pcs/bracket required*



- RB13 for tile-shaped metal profile roof
- *Optional gaskets*
- *Optional screws, 2pcs/bracket required*

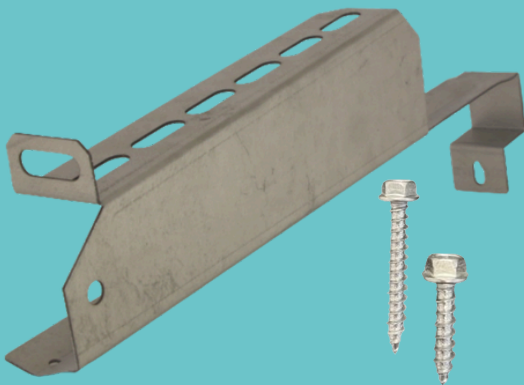


- RB14 for wave-shaped metal profile roof
- Pre-installed gasket strip
- *Optional screws, 4pcs/bracket required*

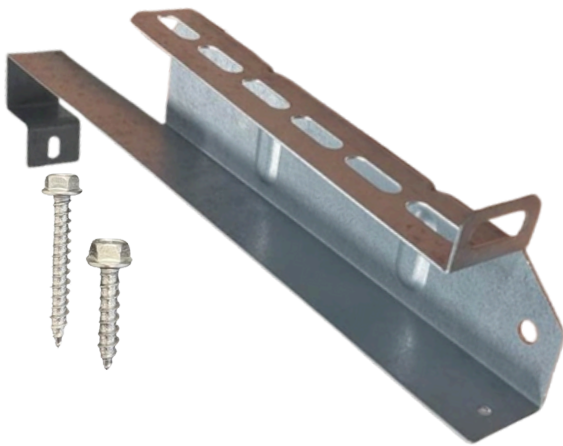


# NORDIC SLOPE

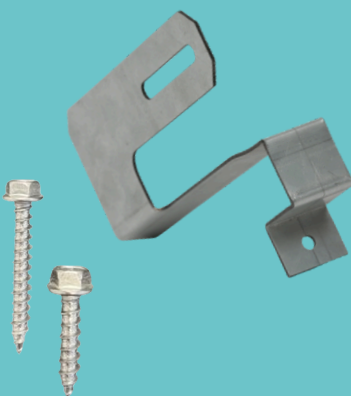
## ROOF BRACKETS



- RB15 for tile roof
- 1,5mm wall thickness
- *Optional screws, 1pcs/bracket required*



- RB27 for tile roof
- 2mm wall thickness, for extra heavy duty
- *Optional screws, 1pcs/bracket required*



- RB06 for tile roof brackets RB15 & RB27
- Connects to the lower end of the roof bracket and locks it to the roof structure. Especially useful in windy locations.
- *Optional screws, 1pcs/bracket required*

# NORDIC SLOPE

## ACCESSORIES

BN01

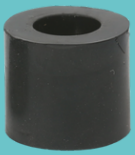


- BN01 - T-bolt & nut set
- To fix aluminum profile on roof brackets
- Easy installation - put through the hole, lock by turning and tighten the nut

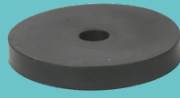
EC01



- EC01 - end cup for the aluminum profile
- To protect the ends of the profile
- To give more esthetically finished look to the installation



RS02



RS01

- Rubber gaskets
- Ring and tube type
- For RB13

SS01



SS02



- Screws for roof brackets
- Stainless steel
- SS01 - 7x50mm
- SS02 - 7x30mm



CC02



CC01

- CC01 - Cable clip with panel grip and reinforced structure
- CC02 - Cable tie with panel grip, multiposition

PV01



- PV cable set
- 3x6mm<sup>2</sup> cables in 25mm corrugated tube
- 100m coil

**Moisolar**



[info@moisolar.com](mailto:info@moisolar.com)



[www.moisolar.com](http://www.moisolar.com)



+358 40 838 2368