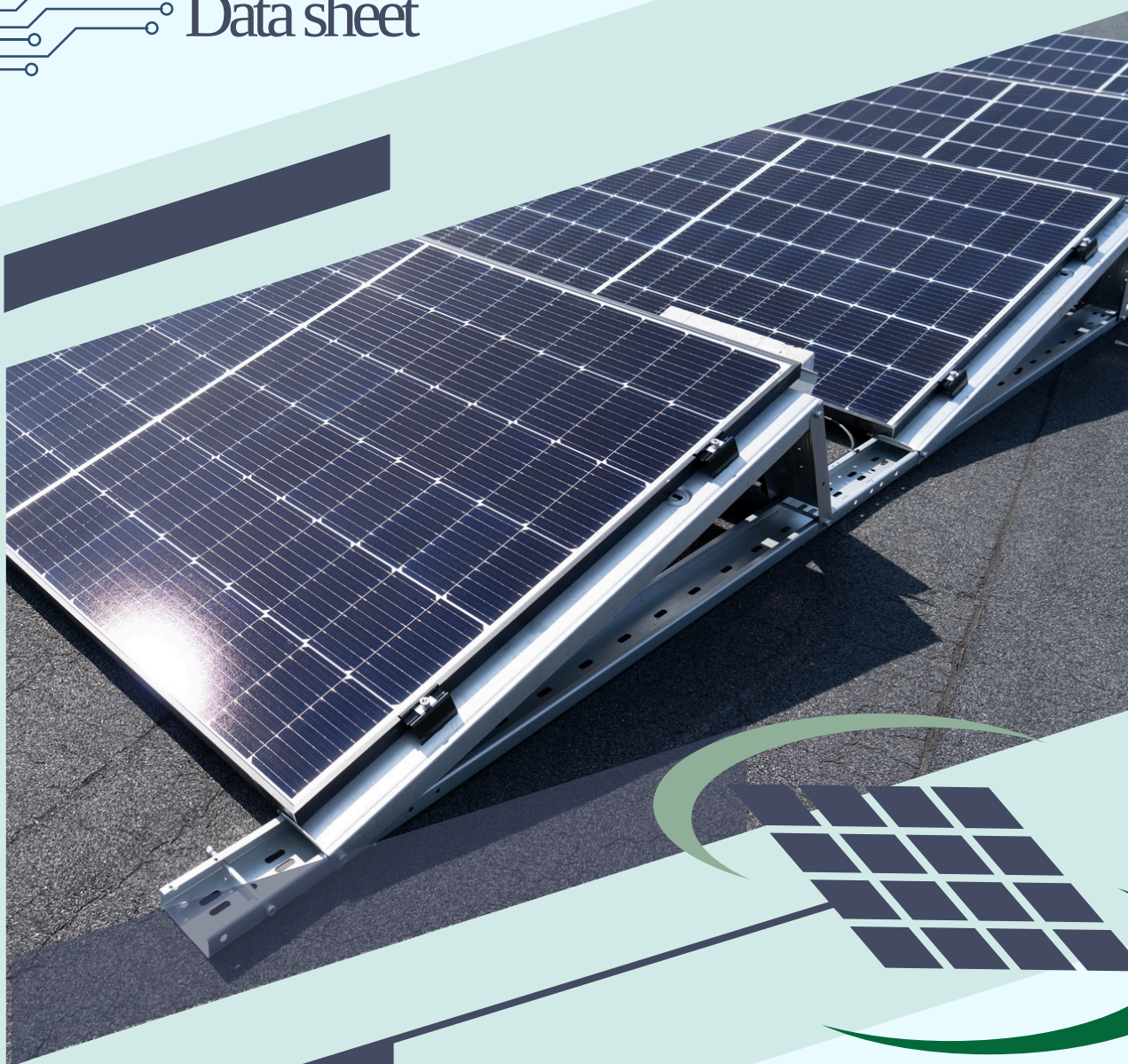


Moisolar

 Data sheet



NORDIC FLAT

Flat Roof Mounting System

Designed for Nordic Conditions

Quick & Easy to Install | 35 Years of Material Warranty | Durable



+358 45 787 53966



info@moisolar.com



moisolar.com

A European-designed and wind tunnel-tested mounting system, built to withstand harsh Nordic conditions. Carefully selected materials and optimized aerodynamics ensure a secure and durable solution for both the roof and solar panels.

The high-quality design considers snow loads, roof pressure and water drainage, wind conditions, and compatibility with various roofing materials, ensuring a long-lasting and reliable installation.

KEY FEATURES



INSTALLATION ANGLE	15 degrees
ROW SPACING	1600 mm
ROOF TYPE	For most common flat roof types Roof angle ± 5 degrees, in special cases ± 10 degrees
MATERIALS	Zinc-Aluminum-Magnesium Coated Steel, Stainless Steel, Aluminum
ROOF LOAD	Frame Weight Starting from 2.8 kg/m ² , Total with Panel 9.4 kg/m ² + Additional Weights if Needed
DESIGN BASE	EN1991-1-4/3 , LOCAL design base
COMPATIBLE SOLAR PANELS	Compatible with All Common Solar Panels Max width: 120 cm, recommended max length: 199 cm. Frame thickness: 30–40 mm.
WARRANTY	35 Years

