

Moisolar



NORDIC SLOPE

Slope Roof Mounting System

Designed for Nordic Conditions

Quick & Easy to Install | 35 Years of Material Warranty | Durable



+358 45 787 53966



info@moisolar.com



moisolar.com



Durable and Reliable Solar Panel Mounting System for Slope Roofs

Moisolar Nordic Slope is a high-quality and durable solar panel mounting system designed for slope roofs. Engineered to ensure long-lasting performance, safety, and easy installation, it provides a secure foundation for solar panels while protecting the roof structure.

Our products are meticulously designed to accommodate a variety of slope roofs, including lock-seamed metal, felt, metal profile, tile-shaped metal profile, wave-shaped metal profile, and traditional tile roofs.



EXCEPTIONAL DURABILITY & LONGEVITY

Engineered to withstand extreme weather conditions, backed by precise wind and snow load calculations.



FAST & EFFICIENT INSTALLATION

Optimized mounting methods ensure a quick, seamless, and high-quality installation process.



SOLAR PANEL FIXTURE CALCULATOR

Calculator for quick and precise estimation of the material



TESTED QUALITY

Salt spray corrosion tested Zn-Al-Mg coated steel alloy. Load tested by SGS.



SITE-SPECIFIC ENGINEERING

Each system is tailored to meet local building regulations and environmental conditions.



OPTIMIZED WATER DRAINAGE

Smartly designed components ensure unobstructed water flow, balanced roof pressure, and sufficient panel support.





At the heart of the NORDIC SLOPE® series are our innovative roof brackets, constructed from a special carbon steel alloy and protected by our exclusive JISCO® coating. This cutting-edge zink-aluminum-magnesium alloy coating, applied through a hot-dip galvanizing method, offers unparalleled corrosion resistance—triple the durability of standard galvanized steel.

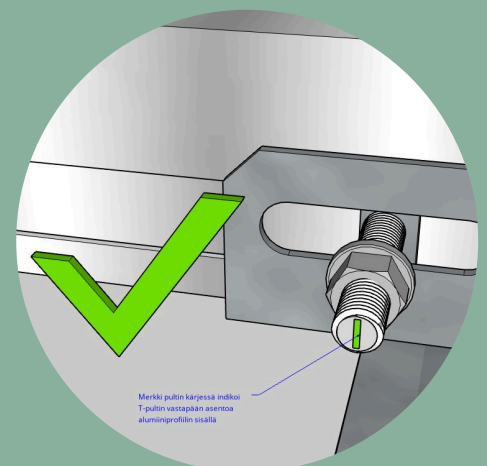
Our profiles and extension connectors are crafted from a special aluminum alloy, ensuring each connector perfectly aligns at the junction's center for enhanced load-bearing efficiency. Coated with the electrophoresis method, our clamps boast a durable finish and are engineered with unique features to simplify the installation process.

From the spring-assisted clamp that facilitates panel insertion to the middle clamp's stoppers that prevent anchor-wedge loss during adjustment, every element is designed with precision.



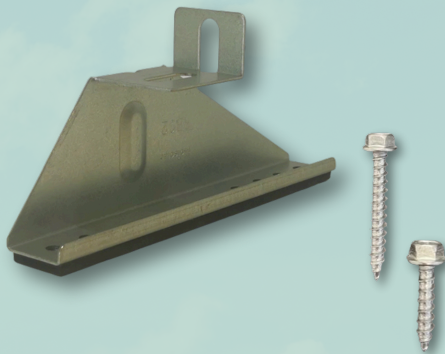
Easy to Install

- Aluminum profile and tailor made connector with rubber spacer for evenly distributed support on the joints
- Spring raised clamps for quick and easy one-person panel installation.
- Middle clamp body is equipped with stopper to prevent the clamp from falling apart when bolt is completely loosened.
- For 30-40 mm panels
- Integrated grounding pins

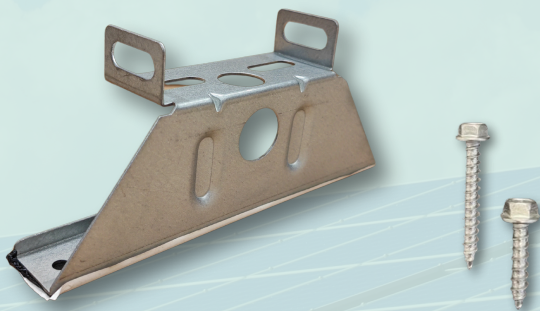




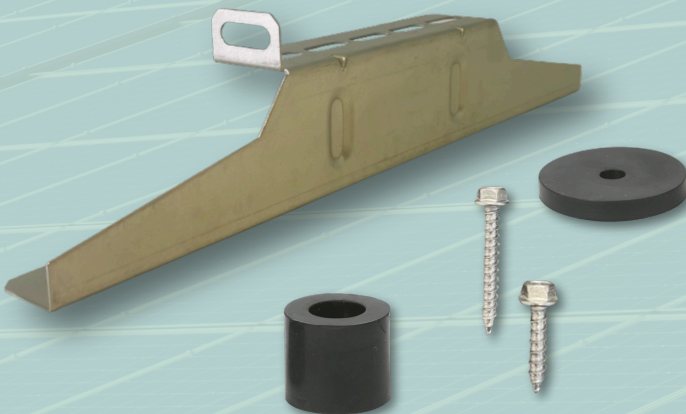
- **RB11**
- For lock-seamed metal roof
- Adjustable height



- **RB12**
- For felt roof and metal profile roof
- Pre-installed gasket strip
- *Optional screws (SS01/SS02), 4 pcs/bracket required*

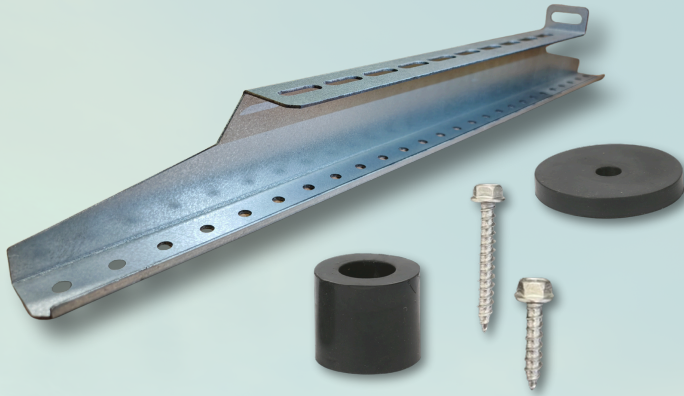


- **RB32**
- For felt roof and metal profile roof
- Additional holes for ease of installation and for cables
- *Optional screws (SS01/SS02), 4 pcs/bracket required*

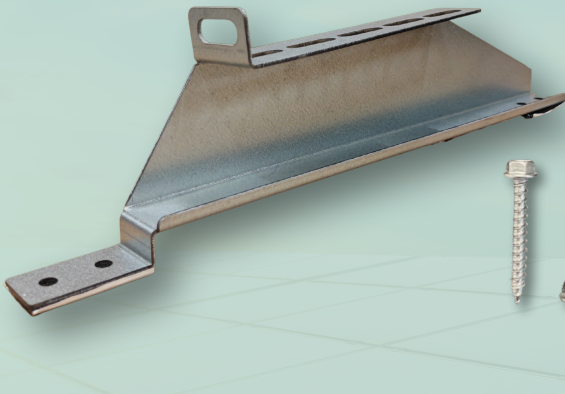


- **RB13**
- For tile-shaped metal profile roof
- *The attachment is done with screws and sealing/adjustment plates **RS01 & RS02***
- *Optional screws (SS01/SS02), 2 pcs/bracket*

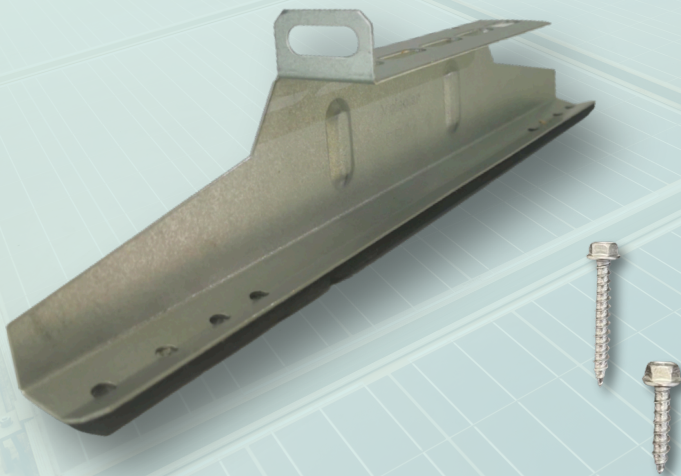




- **RB13L**
- For roof with 600 mm batten spacing
- The attachment is done with screws and sealing/adjustment plates.
- *Optional gaskets RS01 & RS02*
- *Optional screws (SS01/SS02), 2 pcs/bracket*

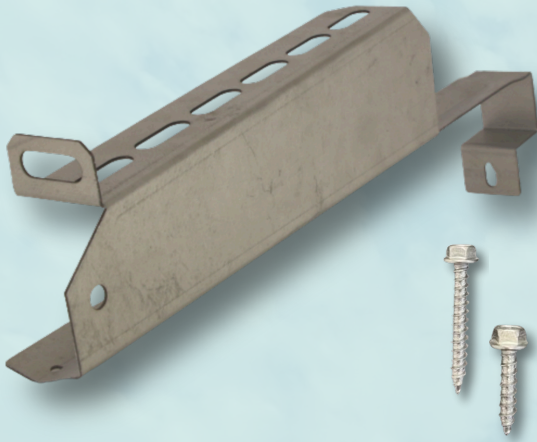


- **RB33**
- For tile-shaped metal profile roof
- Ready bended for roof tile shape.
- *Optional screws (SS01/SS02), 2 pcs/bracket*

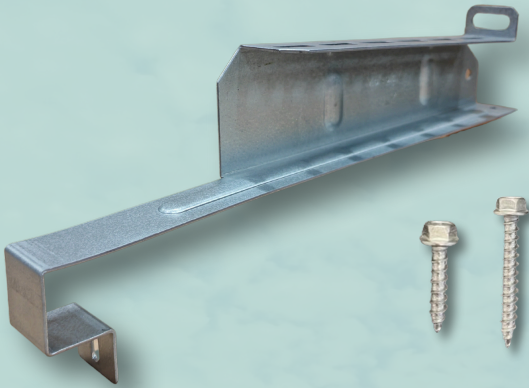


- **RB14**
- For wave-shaped metal profile roof
- Pre-installed gasket strip
- *Optional screws (SS01/SS02), 2 pcs/bracket*

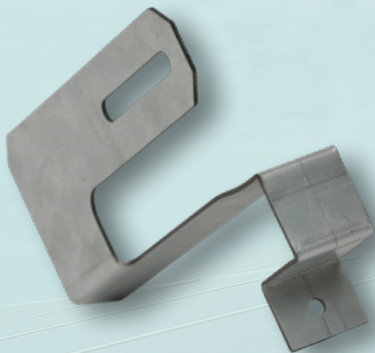




- **RB15**
- For tile roof
- 1,5 mm wall thickness
- *Optional screws (SS01/SS02), 1 pcs/bracket required*



- **RB27**
- For tile roof
- 2 mm wall thickness, for extra heavy duty
- *Optional screws (SS01/SS02), 1 pcs/bracket required*

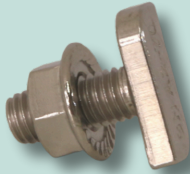


- **RB06** for tile roof brackets **RB15 & RB27**
- Connects to the lower end of the roof bracket and locks it to the roof structure. Especially useful in windy locations.
- Attached with M10 flange nut and bolt



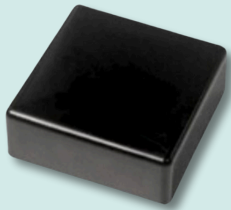


BN01

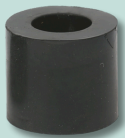


- **BN01** - T-bolt & nut set
- To fix aluminum profile on roof brackets
- Easy installation - put through the hole, lock by turning and tighten the nut
- Made of stainless steel AISI 304

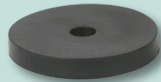
EC01



- **EC01** - end cup for the aluminum profile
- To protect the ends of the profile
- To give more aesthetically finished look to the installation



RS02



RS01

- Rubber gaskets
- Ring and tube type
- For RB13

SS01



SS02



- Screws for roof brackets
- Stainless steel
- SS01 - 7x50 mm
- SS02 - 7x30 mm



CC02



CC01

- **CC01** - Cable clip with panel grip and reinforced structure
- **CC02** - Cable tie with panel grip, multiposition

PV01



- PV cable set
 - 3x6 mm² cables in 25 mm corrugated tube
 - 100 m coil

